

Proposed Pinecrest Solar Farm at Lidsdale, NSW

Banpu Energy Australia (Banpu Energy) is in the early planning and approval stages, in developing the proposed Pinecrest Solar Farm, within Lidsdale, New South Wales, approximately 12 kilometres north-west of Lithgow. The Project would consist of a 130 megawatt (MWp) solar farm as well as an electrical substation and associated infrastructure.

Community information sessions

The project team will be hosting three community information sessions, one online and two in person:

Date Wednesday, 8 June 2022 **Time** 10am-11.30am

Venue Online

Date Saturday, 11 June 2022 **Time** 9am-12pm

Venue Wallerawang Library

Date Saturday, 11 June 2022 **Time** 4pm-9pm

Venue The Foundations, Twilight Market

If you wish to attend the online session or drop in session at Wallerawang, please register for the event/s by entering your contact details here: <https://forms.office.com/r/m0ZTGwPkWE> or by scanning this QR code.



Our team is also available to speak with outside of these information sessions. Please contact us via free call 1800 032 358 or pinecrestsolarm@emmconsulting.com.au at a time convenient to you.

Key Statistics



130 MWp solar farm with a 30-year operational life



240,000 solar panels, to be installed on the 300 ha site



6,654GWh of electricity produced, over the life of the project



High-voltage transmission line connecting to existing transmission infrastructure



Providing the energy needs of 20,175 households, every year



Reduced greenhouse gas emissions equivalent to taking 34,510 cars off the road

Approvals process

Approval for the Project is being sought through a State significant development (SSD) application, to be assessed under Part 4 of the NSW *Environmental Planning and Assessment Act 1979*. The NSW Department of Planning and Environment (DPE) is the determining authority for SSD applications.

Banpu Energy is seeking feedback from the local community as part of the planning and development process. See the back page for how to contact the project team.

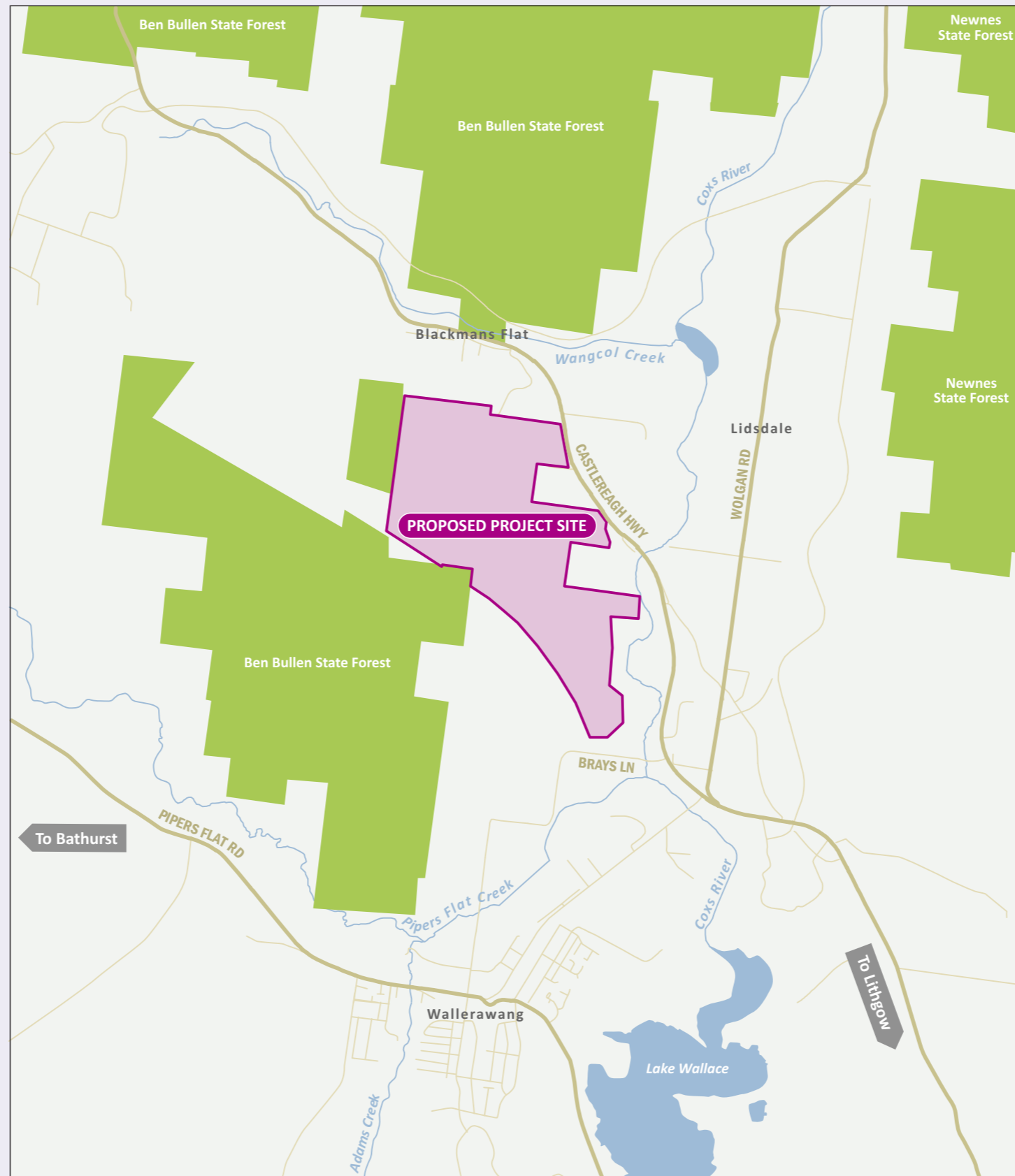
Project Status

A Scoping Report is currently being prepared, which will describe the Project and identify key matters requiring further assessment, as part of preparing the Environmental Impact Statement (EIS) and, proposed approach to assess each of these matters. The Scoping Report will be submitted to DPE to obtain the Secretary’s Environmental Assessment Requirements, which set out the technical requirements for the EIS. The Scoping Report will be publicly available on DPE’s Major Projects website, once it is submitted.

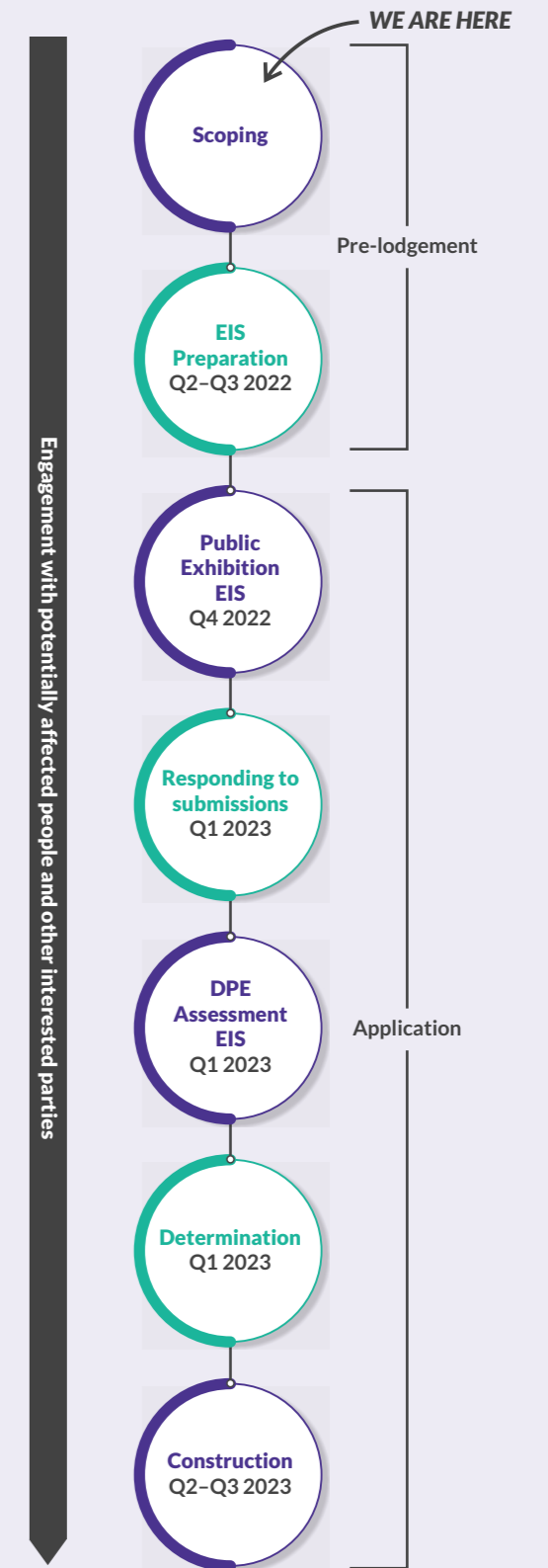
The assessments to be undertaken as part of preparing the EIS will cover a range of matters, including - but not limited to:

- Aboriginal heritage
- Air Quality
- Biodiversity
- Cumulative Impacts
- Economic
- Hazard and Risk
- Land Use
- Noise
- Non-Aboriginal Heritage
- Social and community
- Traffic
- Visual
- Water Quality

Project locality map



Project timeframes



Please note: timeframes are subject to NSW Government approval processes and timeframes

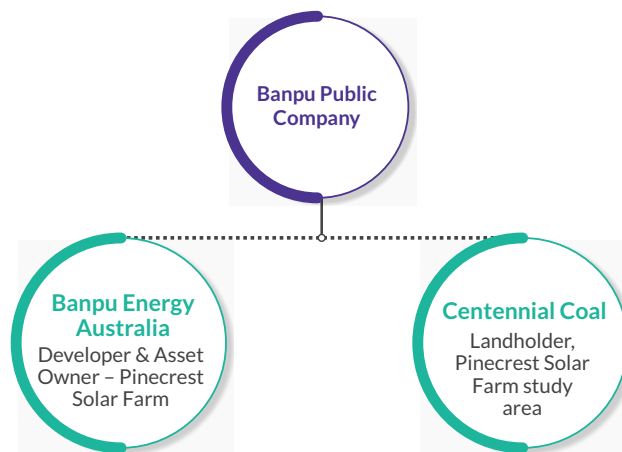
Who are we?

Banpu Energy is the applicant and asset owner for the Project.

Banpu Energy is a subsidiary of Banpu Public Company Ltd, a Thai based company that runs three core business groups: Energy Resources (coal and gas), Energy Generation (base-load and renewable power plants), and Energy Technology (total solar energy solutions, energy storage and technology).

Banpu's business focus is to accelerate growth and transition towards green energy via its *Greener and Smarter* strategy.

Centennial Coal owns the land that the Pinecrest Solar Farm will be developed on and has been a subsidiary company of Banpu Public Company Ltd since 2010.



Banpu Energy has engaged **EMM Consulting Pty Limited**, a leading planning and environmental consultancy, to prepare the Scoping Report and EIS for this Project.

How can I be involved?

Community consultation is important to Banpu Energy.

Banpu Energy and EMM will be contacting a range of stakeholders in coming months. This will include nearby residents, local businesses and service providers, community groups and government agencies.

Feedback received will be summarised and shared with the community in future project updates. Further consultation is also planned as the EIS is developed and results from the Project impact assessments are known.

We look forward to your participation and involvement.

Contact Us

t 1800 032 358 (free call)

e pinecrestsolarfarm@emmconsulting.com.au

w www.banpuenergy.com.au